

LOCKLY GUARD™

WWW.LOCKLYPRO.COM
PGD228W

FOR COMMERCIAL USE & PROFESSIONAL INSTALLATION

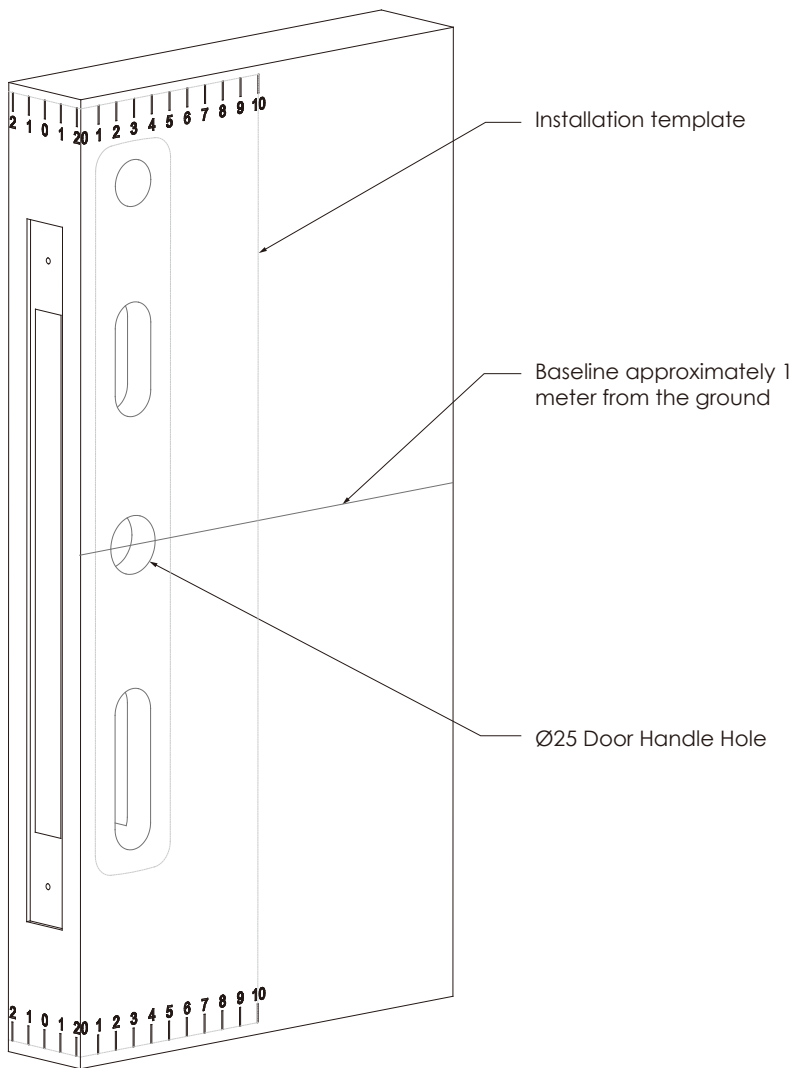


ATHENA (228SL) (228SW) SLIDE & SWING EDITION

INSTALLATION GUIDE

Preparation

Prepare door: remove existing deadbolt or use provided template to bore new holes.

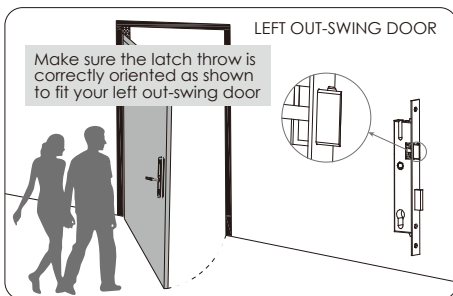
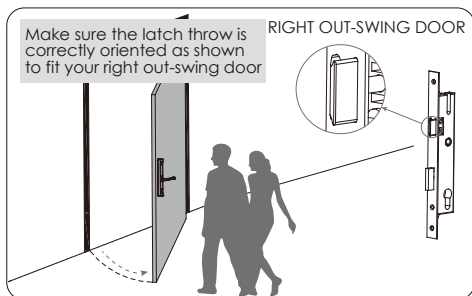
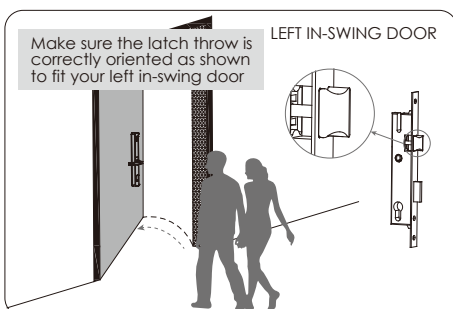
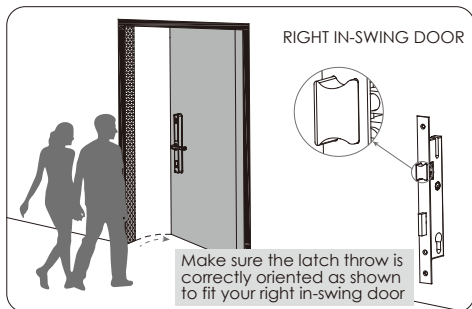


Step 1

DETERMINE DOOR OPENING DIRECTION

There are 4 common door-opening directions, the lockset configuration as shown on each diagram below corresponds to the respective door-opening direction.

NOTE: If you're installing a Slide Edition, skip these steps and proceed to **Step 3**



IMPORTANT

This lock is designed for 35-65mm Wooden or Aluminium Door or Aluminium Thermal Barrier Door. If your door is outside the range of the list above please contact our Customer hotline: (669) 500-8835

Before installing the key cylinder and spindle, make sure you have already adjusted your Latch throw (Step 2) and door handle (Step 3) according to door opening direction.

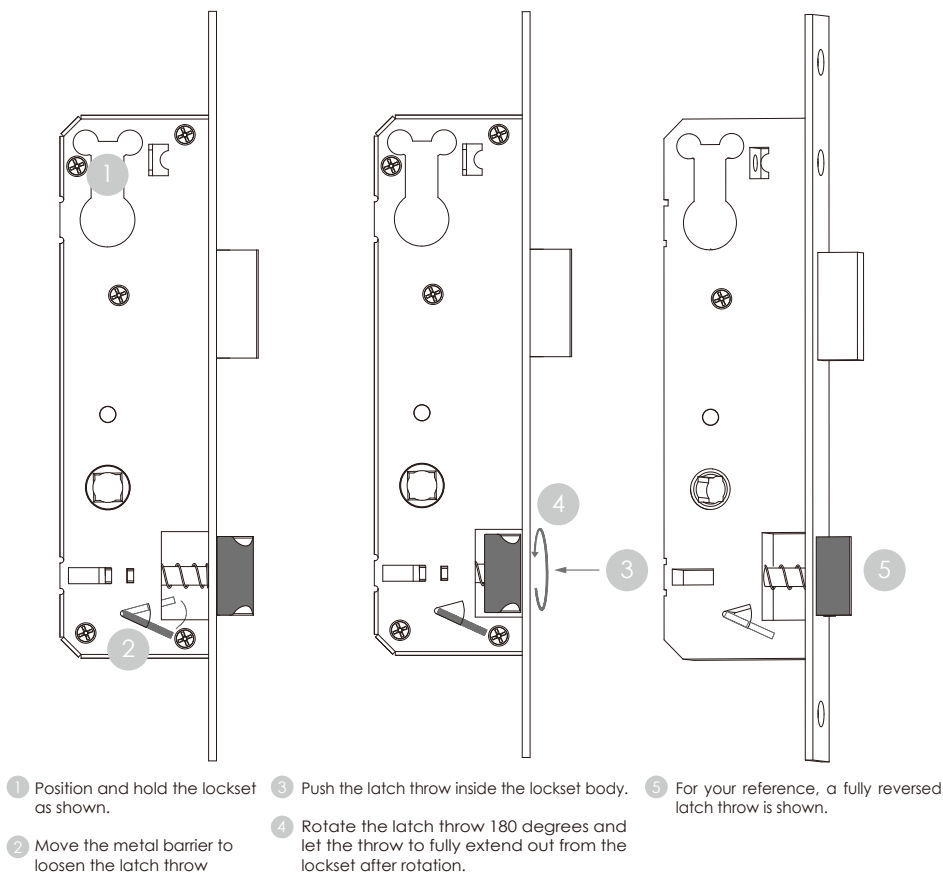
Step 2

ADJUSTING THE LATCH THROW

Follow the below steps if you're installing ATHENA SWING EDITION with model and backset size: PGMB118 1 1/8" (28mm) , PGMB138 1 3/8" (35mm), PGMB158 1 5/8" (40mm), PGMB134 1 3/4" (45mm), PGMB238 2 3/8" (60mm)

Lockset ships default for RIGHT IN-SWING or LEFT OUT-SWING DOORS. Skip this procedure if your door orientation is as stated. See Step 1 to determine your door opening direction.

Follow the step by step direction to adjust the lockset for LEFT IN-SWING or RIGHT OUT-SWING DOORS.



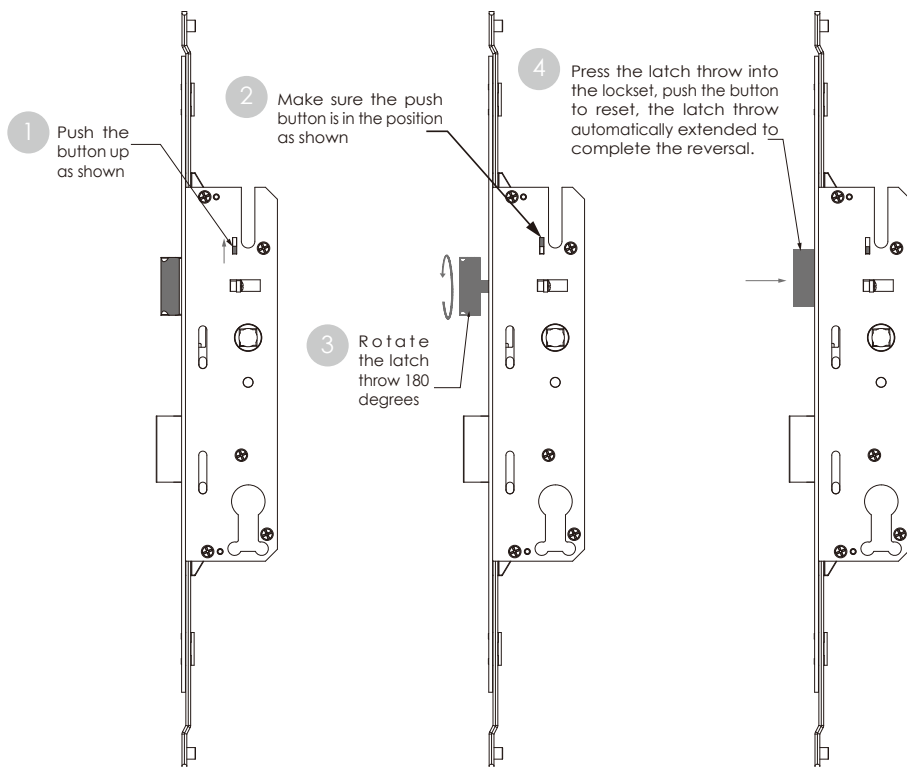
NOTE: If you're installing a Slide Edition skip this step and proceed to **Step 3**.

If you're installing a Multi-Point Lockset for a Swing Edition, see next page to adjust the latch throw.

FOR MULTI-POINT LOCKSET MODELS: PGMB138H 1 3/8" (35mm) / PGMB158H 1 5/8" (40mm) / PGMB134H 1 3/4" (45mm)

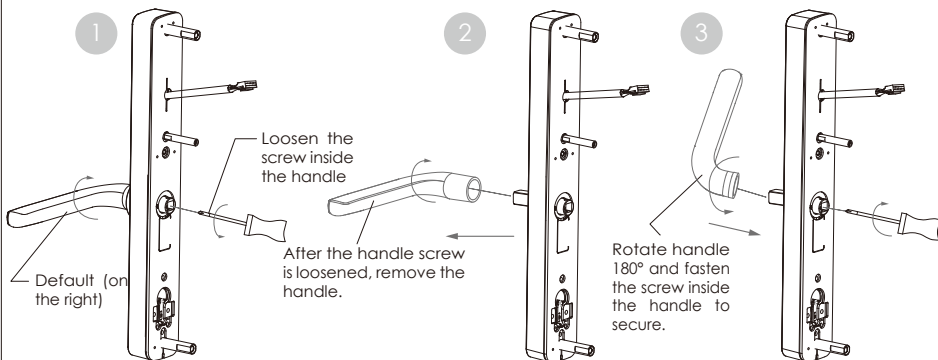
Default setting for these lockset models is for RIGHT IN-SWING or LEFT OUT-SWING DOORS. Skip this procedure if your door orientation is as stated. See Step 1 to determine your door direction.

Follow the step by step direction to adjust the lockset for LEFT IN-SWING or RIGHT OUT-SWING DOORS.

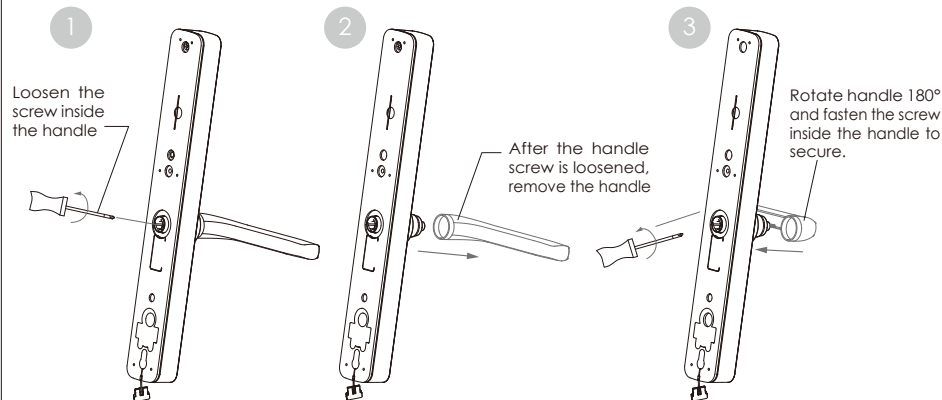


The diagram below shows how to shift the door handle from right to left direction. The default setting of the handle is for right handed door. You do not need to change direction if you have a right handed door.

Change the handle direction of the Exterior Panel



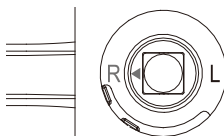
Change the handle direction of the Interior Panel



IMPORTANT

Ensure the handle is correctly positioned according to desired direction (L/R)

For Right swing door align handle to "R"

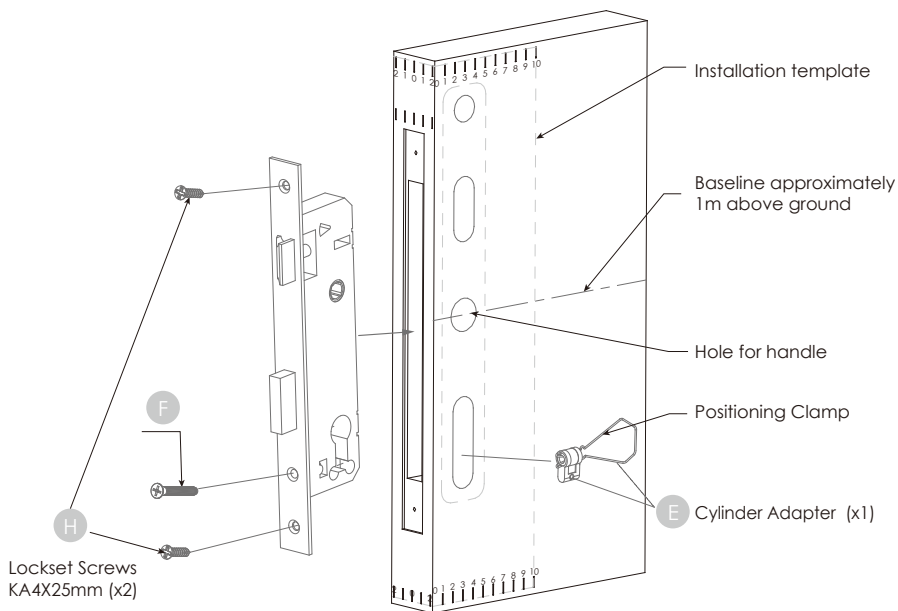


For Left swing door align handle to "L"



Make sure your door is prepared for installation. If you need to drill new holes, please use the supplied template for drilling holes. Before installing the Lockset (S), confirm the door opening direction (Step 1) and ensure latch throw inclined part is positioned opposite to the opening direction.

Insert Lockset onto door hole and secure with screws (H) (top and bottom) & (F) .



Adapter Positioning Screw (F) (x1)

KM5x35mm

PGMB118 1 1/8" (28mm)

PGMG118 1 1/8" (30mm)

PGMG118H 1 1/8" (30mm)

KM5x40mm

PGMB138 1 3/8" (35mm)

PGMB138H 1 3/8" (35mm)

PGMG138 1 3/8" (35mm)

PGMG138H 1 3/8" (35mm)

KM5x45mm

PGMB158 1 5/8" (40mm)

PGMB158H 1 5/8" (40mm)

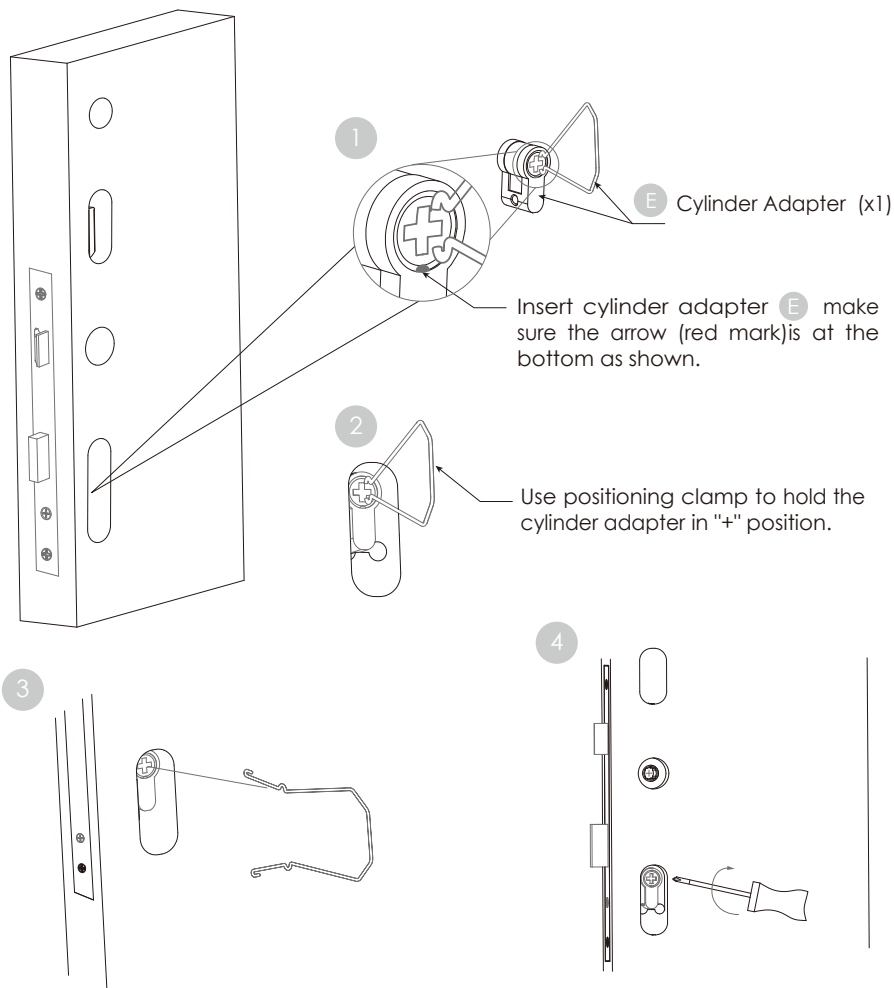
KM5x50mm

PGMB134 1 3/4" (45mm)

PGMB134H 1 3/4" (45mm)

KM5x65mm

PGMB238 2 3/8" (60mm)



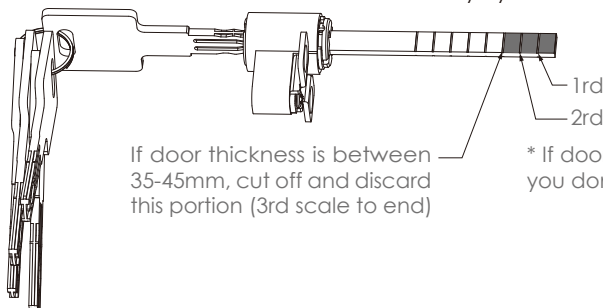
Step 5

ATTACHING EXTERIOR PANEL INSTALLATION PARTS

Before installing the key cylinder, make sure your door handle have been adjusted to your door opening direction, see **Step 2**.

Install Key Cylinder

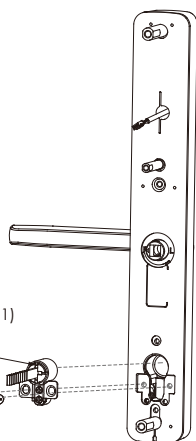
1. Measure door thickness and cut off the key cylinder blade (if necessary).



PGD228WSWSS-28;
PGD228WSWSS-40;
PGD228WSWSS-60

* If door thickness is more than 45mm, you don't need to cut the blade.

2. Insert key cylinder to exterior panel.
3. Secure the cylinder with screws (x2) on both sides.
4. Insert M4 slotted barrel extension according to lockset dimension.



M4 Slotted Barrel
Extension (x2)

M1

Lock Cylinder(X1)

G

G

KM4X6mm Screws(x2)

For Athena Swing Edition with locksets:
PGMB158 1 5/8" (40mm) and PGMB134 1 3/4" (45mm);
For Athena Slide Edition with locksets:
PGMB138H 1 3/8" (35mm), PGMB158H 1 5/8" (40mm),
PGMB134H 1 3/4" (45mm)

M4 Slotted Barrel
Extension (x1)

M1

M4 Slotted Barrel
Extension (x1)

M1

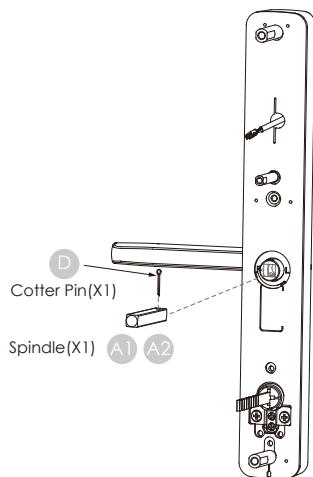
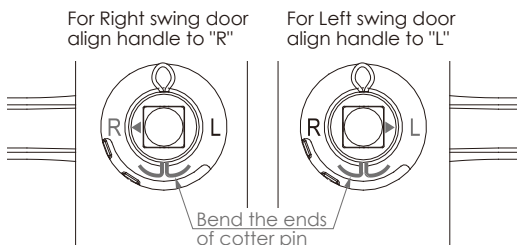
For Athena Swing Edition with locksets:
PGMG118 1 1/8" (28mm) and
PGMB138 1 3/8" (35mm)

For Athena Swing Edition with locksets:
PGMG118 & PGMG118H 1 1/8" (30mm)
and PGMB138H 1 3/8" (35mm)

Install Spindle **A**

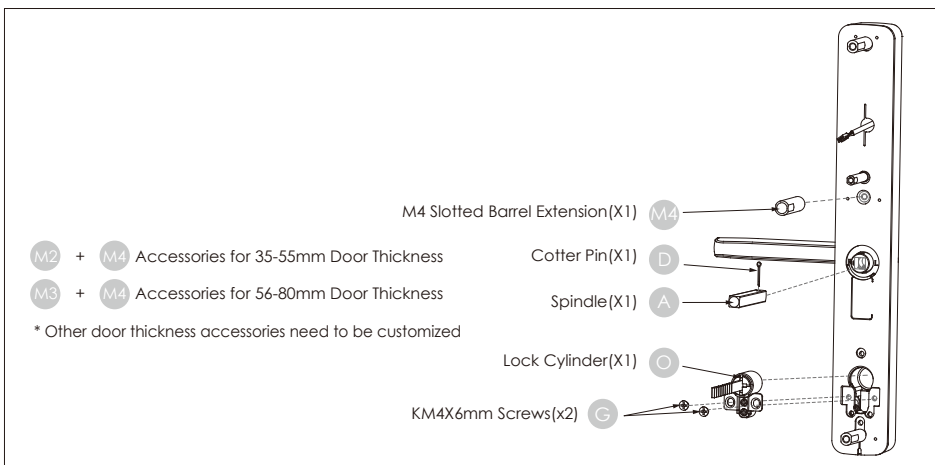
1. Select spindle A1/A2 according to door thickness.
2. Install at the center hole of the exterior panel.
3. Insert cotter pin and bend both ends.

IMPORTANT: Ensure the handle is correctly positioned according to desired direction (L/R) before bending the ends of the cotter pin.



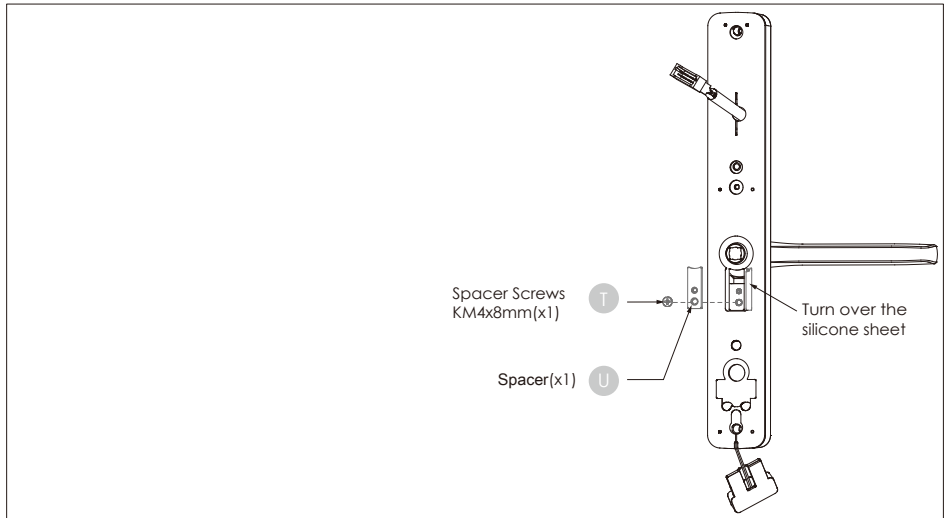
Before installing the key cylinder, make sure your door handle have been adjusted to your door opening direction, see Step 2.

The illustration below applies for lockset : PGMB238 2 3/8" (60mm), Athena Slide Edition

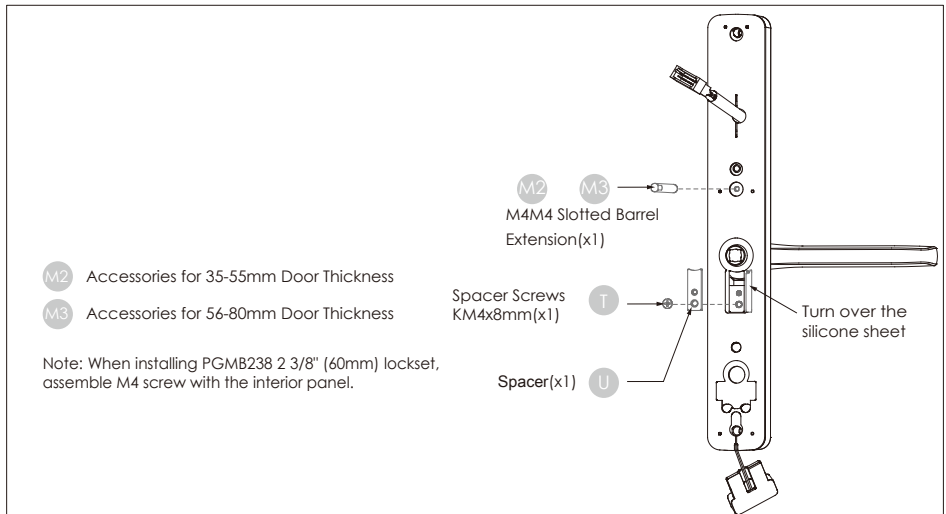


Before installing the key cylinder, make sure your door handle have been adjusted to your door opening direction, see Step 2.

The illustration below applies for All Athena Slide Edition lockset : PGMB118 1 1/8" (28mm), PGMB138 1 3/8" (35mm).



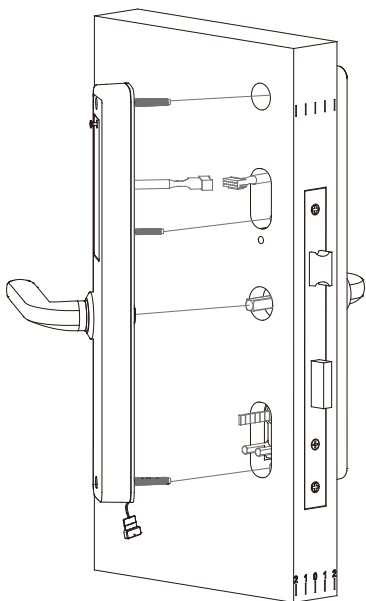
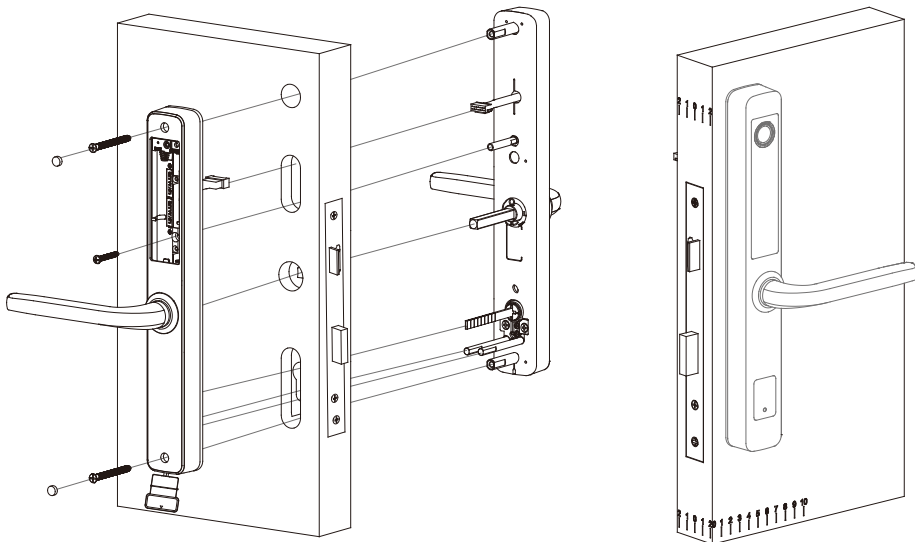
The illustration below applies for lockset : PGMB238 2 3/8" (60mm), Athena Slide Edition



Step 6

INSTALLING THE EXTERIOR AND INTERIOR PANEL

Install the exterior panel onto door. Ensure the spindle, lock cylinder, positioning rods and cable are inserted on the correct holes and passed through the lockset.



Plug the connection cable of the exterior panel to cable of the interior panel. Once connected insert cable to the door frame holes.

Install the interior panel and secure with screws **B** and **C**

Ensure the cables are panels are completely flush flat on the door surface. Use screw caps N to cover B screws.

Escutcheon Screw (x2) **B**

Door Thickness 30-50mm: KM5x46mm

Door Thickness 51-65mm: KM5x61mm

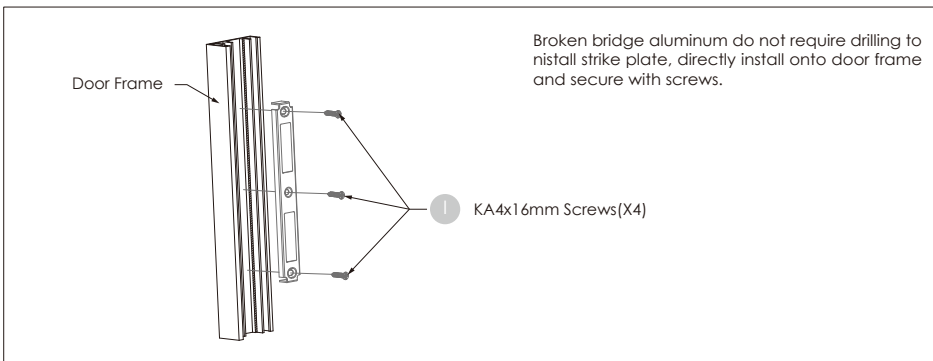
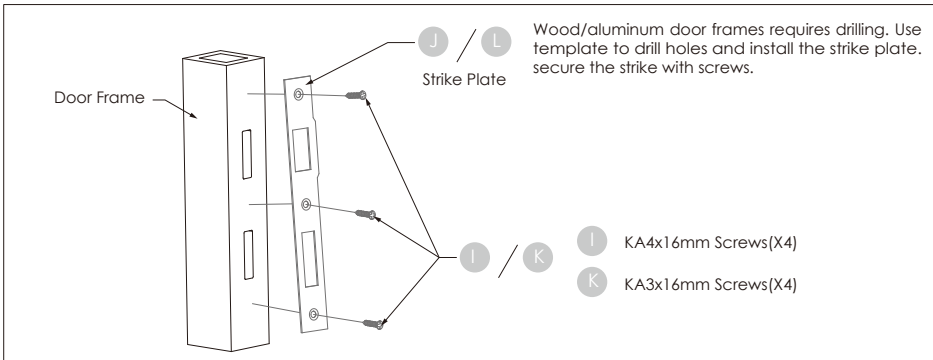
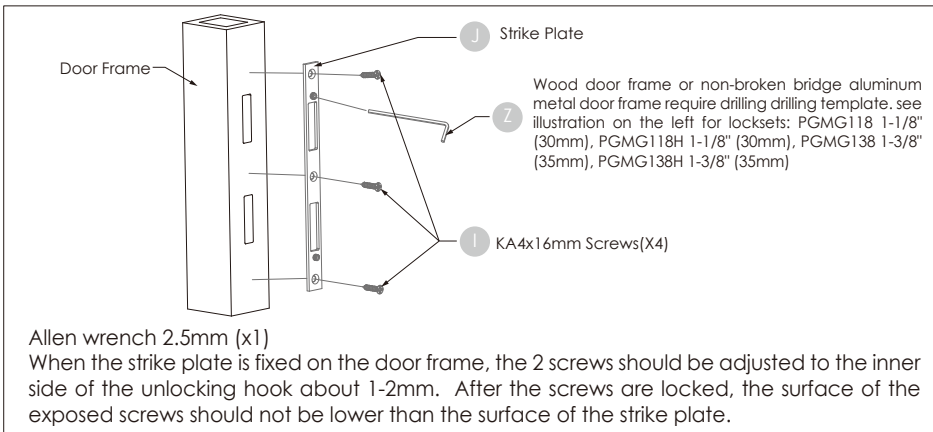
Door Thickness 66-80mm: KM5x76mm

Escutcheon Screw(x1) **C**

Door Thickness 30-50mm: PM4x28mm

Door Thickness 51-65mm: PM4x43mm

Door Thickness 66-80mm: PM4x58mm

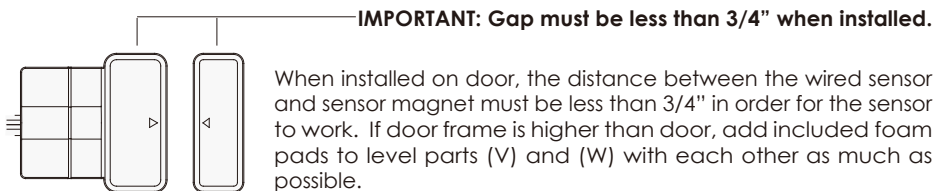
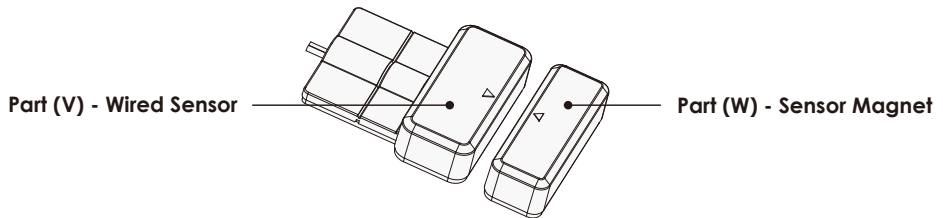


While you are inside the house, try to close and open the door. Check if the deadbolt and latchbolt fits the door frame holes and the door closes properly.

About door sensors

Door sensors provide real-time door condition status, such as the ability to verify if the door is securely closed. It sends push notifications to your phone whenever your door opens.

Lockly Guard Athena comes with a pre-wired door sensors consisting of two parts:



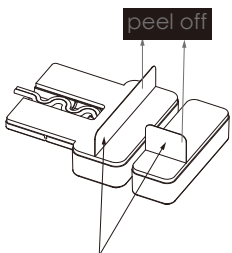
Lockly Guard door sensors comes in Grey (PGA715) and Matte Black (PGA716)

TIP: that can be ordered through our customer hotline: +1 (855) 562-5599 or by email: prosales@lockly.com.

Removal of Sensor (optional)

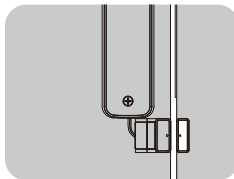
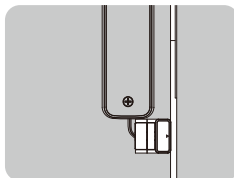
There may be circumstances where the sensor cannot be installed because of molding/door limitations or is not aesthetically desirable. The sensor wired to the lock is removable by carefully pulling its connector from the circuit board. **If removed, some features and functionality will not be available, such as real-time condition status.**

1. Peel off the paper layer of the adhesives from the back of the wired sensor.

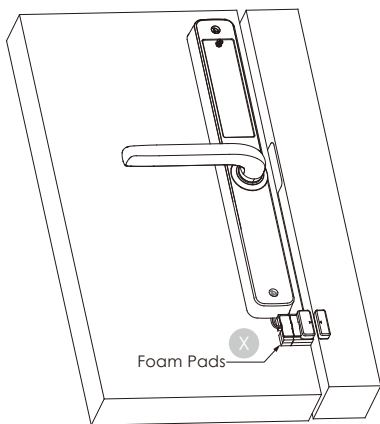


Peel off the paper layer of the adhesives from the back of the wired sensor.

2. Position the wired sensor to the edge of the door, avoiding the door strike plate. Attach and secure with the adhesives.



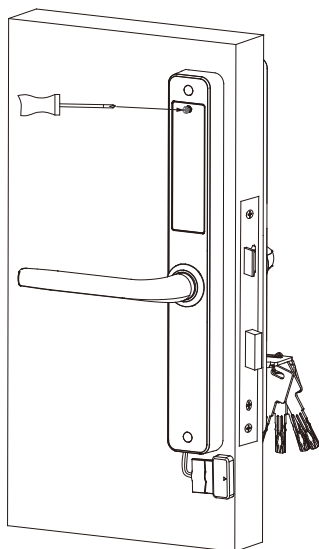
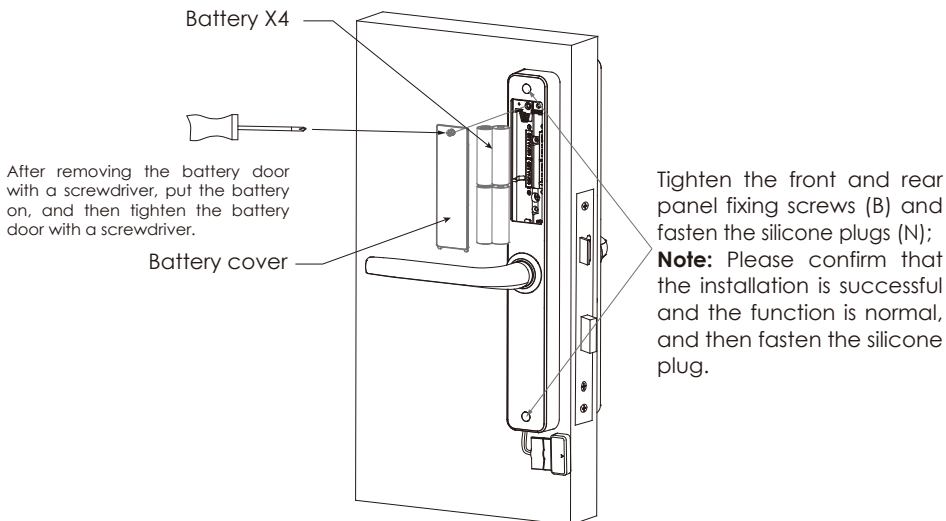
3. Close the door. Before you peel off the paper layer of the adhesives from the sensor magnet, align the arrow with the wired sensor. Install on to door frame.



IMPORTANT:

The arrows must be aligned or as closed as possible (less than 3/4"). If needed, adjust the position of the sensor magnet using provided foam pads to ensure the Lockly logo blinks red when door opens or closes.

1. Open the battery compartment and insert 4 AA batteries. Make sure the batteries are correctly positioned.



2. Check the lock functions according to user manual after installing the batteries. Use the battery cover to secure the battery compartment and fasten with screw.

Congratulations! You have completed the Lockly Guard physical lock installation. To complete your setup, download the LocklyPro app from the iOS or Google Play app Store and follow on-screen instructions.

**Scan or visit
[Locklypro.com/app](https://locklypro.com/app)**



FCC Warning:

This device complies with Part 15 of the FCC Rules. Operation is subject to the following two conditions: (1) This device may not cause harmful interference, and (2) this device must accept any interference received, including interference that may cause undesired operation.

NOTE 1: This equipment has been tested and found to comply with the limits for a Class B digital device, pursuant to part 15 of the FCC Rules. These limits are designed to provide reasonable protection against harmful interference in a residential installation. This equipment generates, uses and can radiate radio frequency energy and, if not installed and used in accordance with the instructions, may cause harmful interference to radio communications. However, there is no guarantee that interference will not occur in a particular installation. If this equipment does cause harmful interference to radio or television reception, which can be determined by turning the equipment off and on, the user is encouraged to try to correct the interference by one or more of the following measures:

- Reorient or relocate the receiving antenna.
- Increase the separation between the equipment and receiver.
- Connect the equipment into an outlet on a circuit different from that to which the receiver is connected.
- Consult the dealer or an experienced radio/TV technician for help.

NOTE 2: Any changes or modifications to this unit not expressly approved by the party responsible for compliance could void the user's authority to operate the equipment.

FCC Radiation Exposure Statement

Lockly Guard Link+ complies with FCC radiation exposure limits set forth for an uncontrolled environment. It should be installed and operated with minimum distance 20cm between the radiator & your body.

IC WARNING

This device contains licence-exempt transmitter(s) that comply with Innovation, Science and Economic Development Canada's licence-exempt RSS(s). Operation is subject to the following two conditions:

- (1) This device may not cause interference.
- (2) This device must accept any interference, including interference that may cause undesired operation of the device.

L'émetteur/récepteur exempt de licence contenu dans le présent appareil est conforme aux CNR d'Innovation, Sciences et Développement économique Canada applicables aux appareils radio exempts de licence. L'exploitation est autorisée aux deux conditions suivantes:

1. L'appareil ne doit pas produire de brouillage;
2. L'appareil doit accepter tout brouillage radioélectrique subi, même si le brouillage est susceptible d'en compromettre le fonctionnement.

IC Radiation Exposure Statement

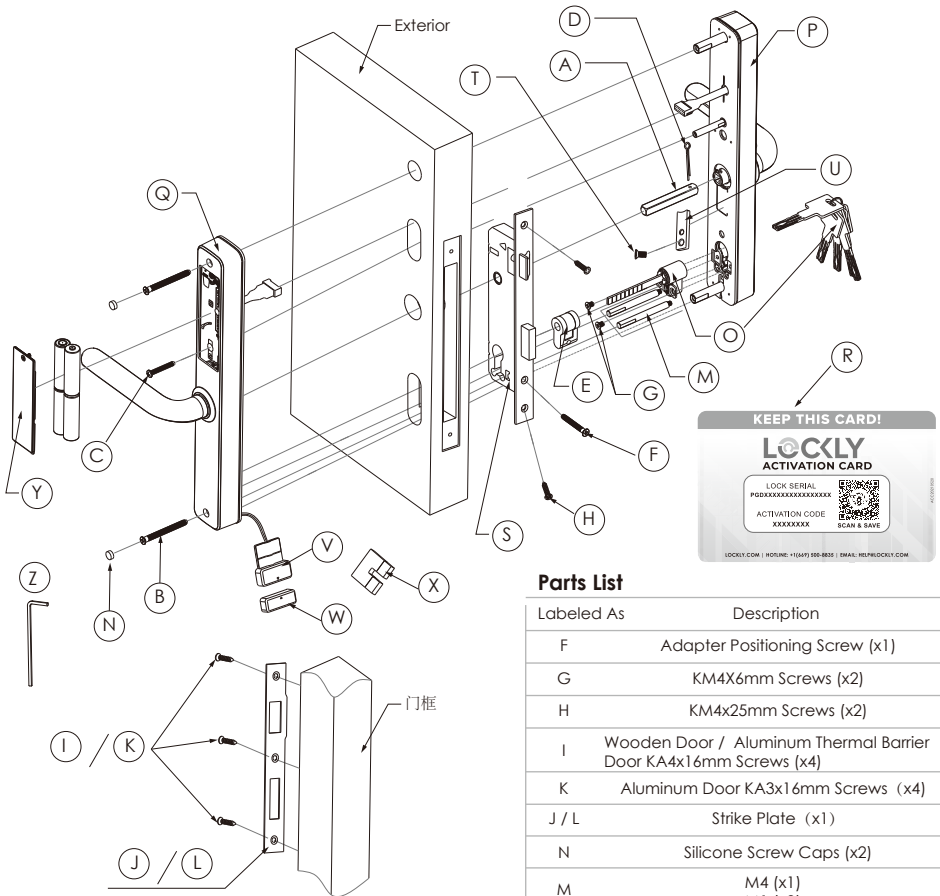
This equipment meets the exemption from the routine evaluation limits in section 2.5 of RSS-102. It should be installed and operated with a minimum distance of 20cm between the radiator and any part of your body.

Cet équipement est conforme à l'exemption des limites d'évaluation habituelle de la section 2.5 de la norme RSS-102. Il doit être installé et utilisé à une distance minimale de 20 cm entre le radiateur et toute partie de votre corps



WARNING: This product can expose you to chemicals including Lead, which is known to the State of California to cause cancer. For more information go to www.P65Warnings.ca.gov.

INSTALLATION OVERVIEW AND PARTS LIST



Parts List









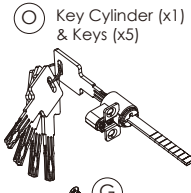


Labeled As	Description
A	Spindle (x1) A1 Door Thickness 35-50mm: Spindle 62mm (x1) A2 Door Thickness 51-77mm: Spindle 77mm (x1)
B	Escutcheon Screw (x2) Door Thickness 30-50mm: KM5x46mm Door Thickness 51-65mm: KM5x61mm Door Thickness 66-80mm: KM5x76mm
C	Escutcheon Screw (x1) Door Thickness 30-50mm: PM4x28mm Door Thickness 51-65mm: PM4x43mm Door Thickness 66-80mm: PM4x58mm
D	Cotter Pin (X1)
E	Cylinder Adapter & Clamp (x1)

Parts List







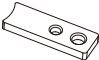

Labeled As	Description
F	Adapter Positioning Screw (x1)
G	KM4X6mm Screws (x2)
H	KM4x25mm Screws (x2)
I	Wooden Door / Aluminum Thermal Barrier Door KA4x16mm Screws (x4)
K	Aluminum Door KA3x16mm Screws (x4)
J / L	Strike Plate (x1)
N	Silicone Screw Caps (x2)
M	M4 (x1) M1 (x2)
O	Key Cylinder (x1) + Keys (x5)
P	Exterior Panel
Q	Interior Panel
R	Activation Card
S	Mortise Lockset
T	KM4X8mm Screws (x1)
U	Spacer (x1)
V	Wired Sensor
W	Sensor Magnet
X	Foam Pads
Y	Battery cover
Z	Strike Plate (x1)

INSTALLATION OVERVIEW AND PARTS LIST

Can be used for either Slide or Swing Edition (part included as per door thickness specification (A or B))













(A) For 35-50mm Door Thickness			
 (A1) 62mm Spindle (x1)	 (C1) PM4x28mm (x1) Escutcheon Screw	 (B1) KM5x46mm (x2) Escutcheon Screw	 (D) Cotter Pin (x1)
(B) For 50-65mm Door Thickness			
 (A2) 77mm Spindle (x1)	 (C2) PM4x32mm (x1) Escutcheon Screw	 (B2) KM5x61mm (x2) Escutcheon Screw	 (D) Cotter Pin (x1)
 (O) Key Cylinder (x1) & Keys (x5)			
 (N) Silicone Screw Caps (x2)			
 (G) KM4X6mm Screws (x2)			

Included part as per Mortise Lockset specification

 (E) Cylinder Adapter & Clamp (x1)		 (M1) Slotted Barrel Extension (x2)	
 (F) Adapter Positioning Screw (x1) KM5x35mm: PGMB118 1 1/8" (28mm) PGMG118 1 1/8" (30mm) PGMG118H 1 1/8" (30mm) KM5x40mm PGMB138 1 3/8" (35mm) PGMB138H 1 3/8" (35mm) PGMG138 1 3/8" (35mm) PGMG138H 1 3/8" (35mm) KM5x45mm PGMB158 1 5/8" (40mm) PGMB158H 1 5/8" (40mm) KM5x50mm PGMB134 1 3/4" (45mm) PGMB134H 1 3/4" (45mm) KM5x65mm PGMB238 2 3/8" (60mm)		<div> For PGMB238 2 3/8" (60mm) Lock Body </div> <div>  (M2) Slotted Barrel Extension 30mm(x1) </div> <div>  (M3) Slotted Barrel Extension 55mm(x1) </div> <div>  (M4) Slotted Barrel Extension 32mm(x1) </div>	
Suitable for Swing Edition		(M1) for 35-80mm door thickness (M4) (x1) for PGD228WSWSS-28, PGD228WSLSS-35, (M4) (x2) for PGD228WSLSS-35, PGD228WSWSS-40 (M2) + (M4) for 35-55mm door thickness (M3) + (M4) for 56-80mm door thickness	
 (U) Spacer(x1)		NOTE: You may customize slotted barrel configuration according to door thickness	
 (T) KM4X8mm Screw(X1)			

INSTALLATION OVERVIEW AND PARTS LIST

Parts individually packed and included according to door specifications

Slide Edition Door Strike Kit						Swing Edition Door Strike Kit	
Wooden Door Frame Strike Plate Kit		Aluminum Door Frame Strike Plate Kit		Aluminum Thermal Barrier Door Strike Plate Kit			
							
KA4x25mm Screws (x3)		KA4x25mm Screws (x3)		KA4x25mm Screws (x3)		KA4X25mm Screws(X3)	
							
KA4x16mm Screws (x4)	Strike Plate (x1)	KA3x16mm Screws (x4)	Strike Plate (x1)	KA4x16mm Screws (x4)	Strike Plate (x1)	KA4X16mm Screws (x4)	Door Frame snap (x1)



FOR COMMERCIAL USE & PROFESSIONAL INSTALLATION



We're here to help!
prosales@lockly.com
locklypro.com/support

© Copyright 2022 Lockly All rights reserved

USA Patent No. US 9,881,146 B2 | USA Patent No. US 9,853,815 B2 | USA Patent No. US 9,875,350 B2 | USA Patent No. US 9,665,706 B2 | USA Patent No. US 11,010,463 B2 | AUS Patent No. 2013403169 | AUS Patent No. 2014391959 | AUS Patent No. 2016412123 | UK Patent No. EP3059689B1 | UK Patent No. EP3176722B1 | Other Patents Pending

The Bluetooth® word mark and logos are registered trademarks owned by the Bluetooth SIG, Inc. , and any use of such marks by Lockly is under license. Other trademarks and trade names are those of their respective owners. Google, Android and Google Play are trademarks of Google LLC.

DISCLAIMER

Lockly has made every effort at the time of publication to ensure the accuracy of the information provided herein, product specifications, configurations, system, components and options availability are all subject to change without notice to improve features, reliability or design or otherwise. For more information, please visit: www.locklyPro.com